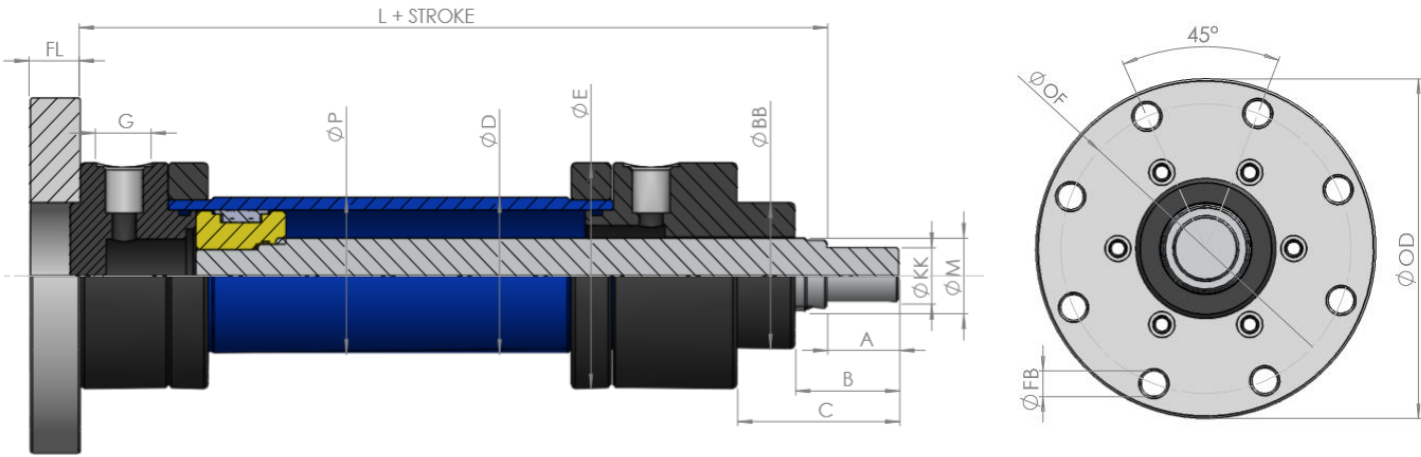
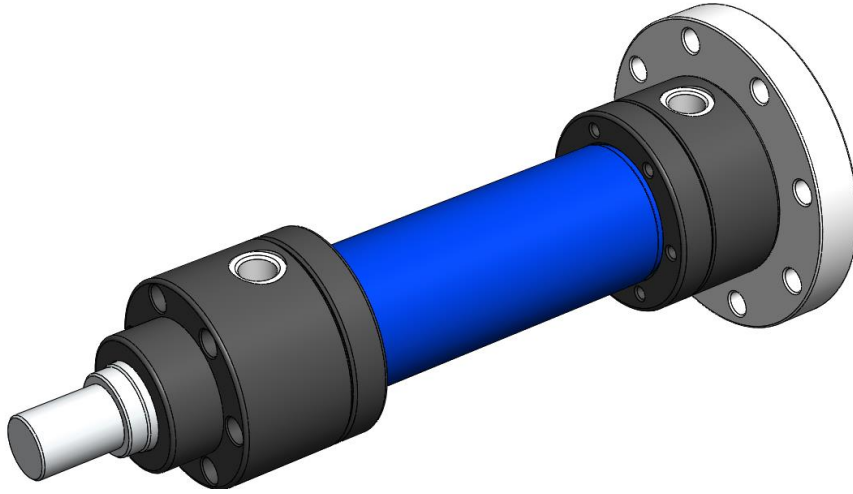


## CETOP R58 H/ISO 6020/1

Çift tesirli hidrolik silindir KS470 A1 serisi (kalın millî)



ØP	Ø32	Ø40	Ø50	Ø63	Ø80	Ø100	Ø125	Ø140	Ø160	Ø180	Ø200
M	22	28	36	45	56	70	80	90	100	110	140
A	22	28	36	45	56	63	75	85	90	95	112
B	35	42	52	63	76	86	100	110	120	125	165
C	54	61	76	92	112	123	137	150	161	170	210
BB	40	50	60	70	85	106	132	145	160	185	200
D	40	50	60	75	95	115	145	160	180	210	245
E	68	78	98	108	129	158	186	210	240	255	296
G	R1/4	R3/8	R1/2	R1/2	R1/2	R3/4	R3/4	R3/4	R1	R1	R1
KK	M16x 1.5	M20x 1.5	M27x 2.0	M33x 2.0	M42x 2.0	M48x 2.0	M56x 2.0	M64x 3.0	M72x 3.0	M80x 3.0	M100 x3.0
L	-	-	-	-	-	-	-	-	-	-	-
OD	110	125	148	170	195	238	272	296	316	365	385
OF	92	106	126	145	165	200	235	260	280	320	340
FL	16	16	20	25	32	32	32	35	36	40	40
FB	9	9	11	13	17.5	22	22	22	22	26	26